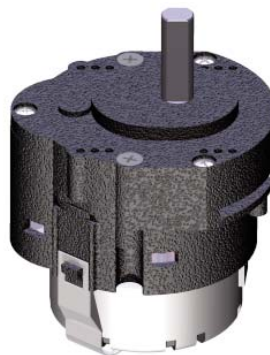


PLASTIC GEARMOTOR SERIES 262-HT



SERIES 262-HT
24V DC



SERIES 262-HT
117/230V AC

TYPICAL APPLICATIONS

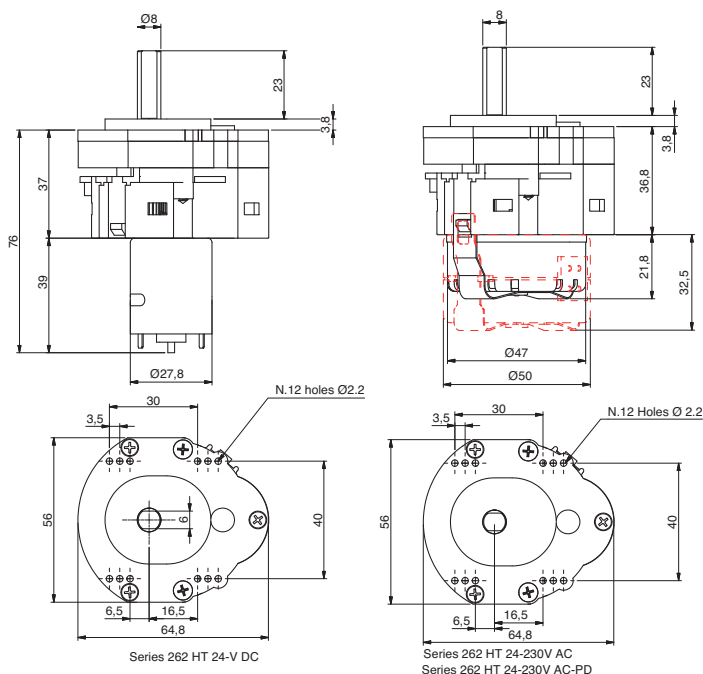
- Hot and cold beverage machines
- In Cup machines
- Electro-mechanical apparatus
- Peristaltic Pumps

CHARACTERISTICS

- The gears within the gearbox, depending on the type, are made of plastic in POM and metal
- The gearbox is produced in either PC or PA glass reinforced and PA glass reinforced version VO
- Supplied with standard output shaft "D" Ø8 x 6 mm
- Other shafts on request

Power supply

- 24V DC/AC
- 230V AC 50 Hz
- 117V AC 60 Hz



SERIES 262-HT
24V DC

SERIES 262-HT
117/230 VAC

PLASTIC GEARMOTOR SERIES 262-HT

PERFORMANCE

24V DC

| OUTPUT (RPM) | STALL TORQUE (NCM) |
|--------------|--------------------|
| 1,3 | 320 |

230V AC/50HZ OR 117VAC/60HZ

| OUTPUT (RPM) | STALL TORQUE (NCM) | MOTOR |
|--------------|--------------------|--------|
| 3,2 | 58 | SINGLE |
| 3,2 | 176 | DOUBLE |
| 1,6 | 107 | SINGLE |
| 1,6 | 362 | DOUBLE |

TECHNICAL DATA

- Ambient temperature 4 - 60 °C
- Compliant with RoHS directive 2002/95/CE